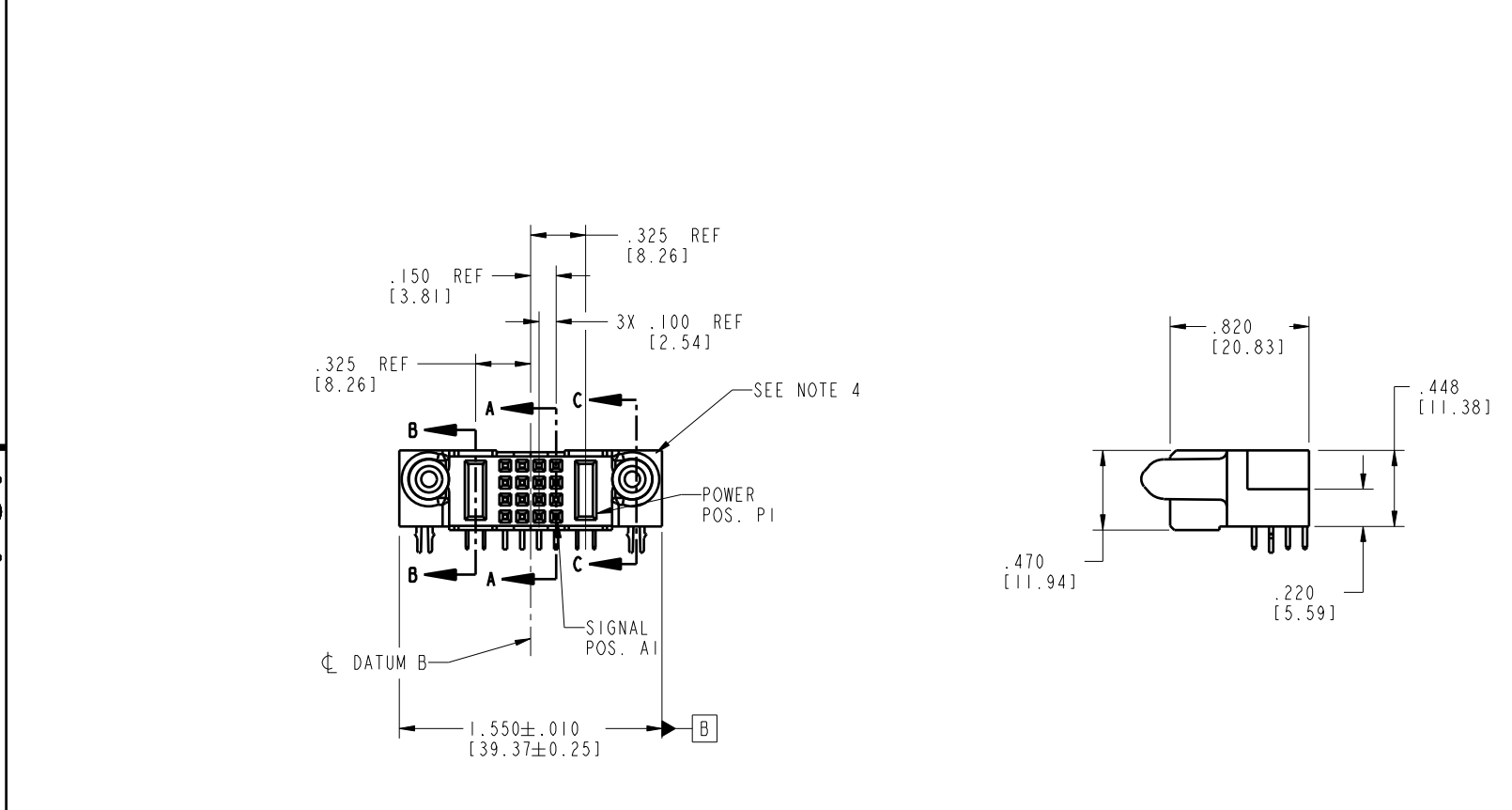
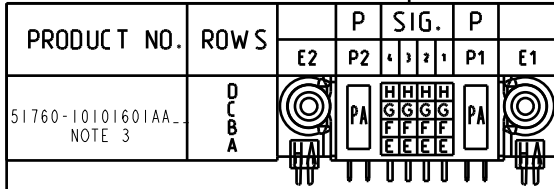


Tous droits strictement réservés. Reproduction ou communication o des liers interdite sous quelque forme que ce soit sans autorisation écrite du propriétaire. Propriété de c FCI. Droits de reproduction FCI.

All rights strictly reserved. Reproduction or issue to third parties in any form without written permission from the proprietor. Property of FCI. Copyright FCI.



CODE	DIM "M" MATING LENGTH	CONTACT TYPE
PA	.042 [1.07]	POWER
H	N/A [N/A]	SIGNAL
G	N/A [N/A]	SIGNAL
F	N/A [N/A]	SIGNAL
E	N/A [N/A]	SIGNAL
HA	N/A [N/A]	HOLD-DOWN

mat'l code				SEE NOTE 2	tolerances unless otherwise specified		CUSTOMER	
lir	ecn no.	dr	date	linear	.XX±.01/0.X±0.3		COPY	
A	V03-0777	MEM	7/14/03		.XXX±.005/0.XX±0.13		projection	
B	DG06-0040	RYAN	02/13/06	angles	.XXX±.002/0.XXX±0.051		INCH/MM	
				dr	0°±2°		scale	
				engr	M. MOSTOLLER	7/14/03	1:1	
				chr	H. BREWBAKER	7/14/03		
				opod	M. MOSTOLLER	7/14/03		
sheet index	revision	B	B	B	B	B		
	sheet	1	2	3	4			

A		FCI		www.fciconnect.com	
title		IP + 16S + 1P			
R/A SOLDER RECEPTACLE					
product family	PwrBlade	code	213		
size	A	dwg no	51760-10101601AA		
		sheet	1 of 4		

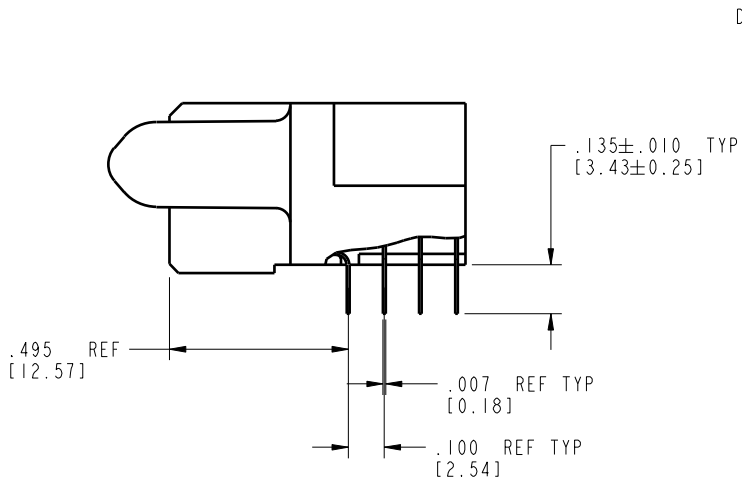
code code 22526

Pro/E

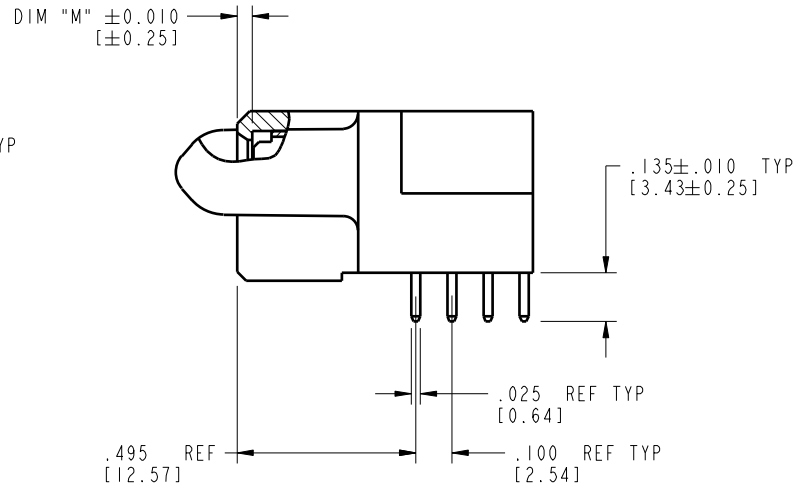
Tous droits strictement réservés. Reproduction ou communication o des liers interdite sous quelque forme que ce soit sans autorisation écrite du propriétaire. Propriété de c FCI. Droits de reproduction FCI.

All rights strictly reserved. Reproduction or issue to third parties in any form whatsoever is not permitted without written authority from the proprietor. Property of FCI. Copyright FCI.

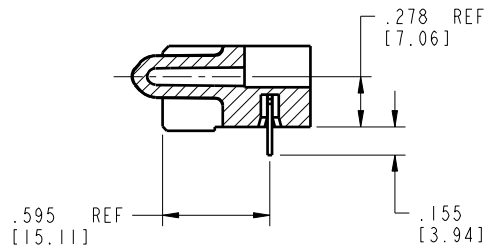
PRODUCT NUMBER
51760-10101601AA--
NOTE 3



BROKEN-OUT SECTION A-A
SCALE 2:1



BROKEN-OUT SECTION B-B
SCALE 2:1



SECTION C-C

mat'l code		SEE NOTE 2		tolerances unless otherwise specified		CUSTOMER		FCI		www.fciconnect.com	
lir	ecn no.	dr	date	linear	.XX±.01/0.X±0.3	COPY		projection	title		
B					.XXX±.005/0.XX±0.13				IP + 16S + IP		
				angles	.XXX±.002/0.XXX±0.051				R/A SOLDER RECEPTACLE		
				dr	0° ± 2°			INCH/MM	product family		code
				engr	M. MOSTOLLER 7/14/03				PwrBlade		213
				chr	M. MOSTOLLER 7/14/03			scale	size		sheet
				appd	H. BREWBAKER 7/14/03				A		
sheet index		revision sheet									

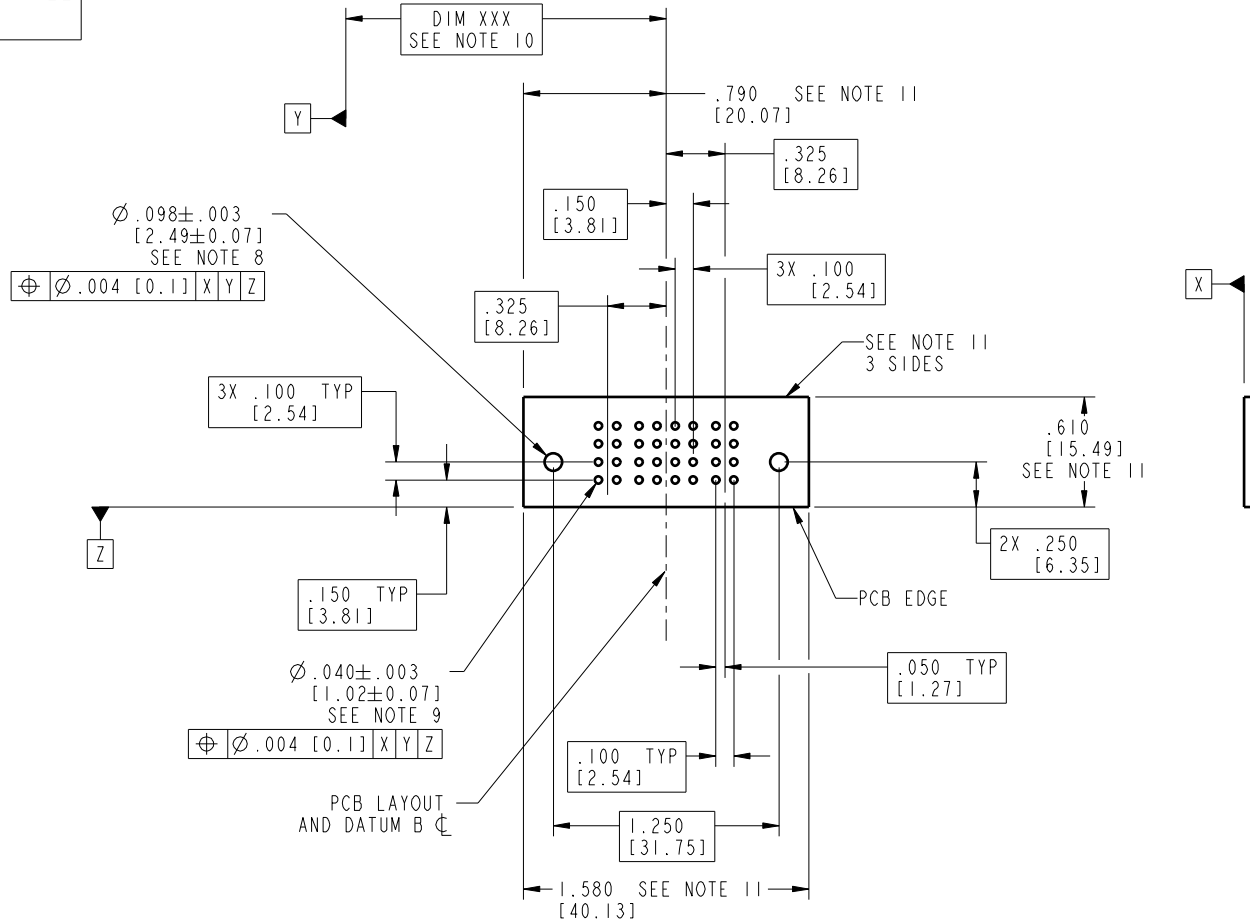
code code 22526

Pro/E

Tous droits strictement réservés. Reproduction ou communication à des tiers interdite sans quelque forme que ce soit sans autorisation écrite du propriétaire. Propriété de c FCI. Droits de reproduction FCI.

All rights strictly reserved. Reproduction or issue to third parties in any form whatsoever is not permitted without written authority from the proprietor. Property of FCI. Copyright FCI.

PRODUCT NUMBER
51760-10101601AA--
NOTE 3



mat'l code		SEE NOTE 2		tolerances unless otherwise specified		CUSTOMER		 www.fciconnect.com	
lir	ecn no.	dr	date	linear	.XX±.01/0.X±0.3	COPY			
B					.XXX±.005/0.XX±0.13	projection		title	
				angles	.XXX±.002/0.XXX±0.051			IP + 16S + 1P R/A SOLDER RECEPTACLE	
				dr	M. MOSTOLLER 7/14/03	INCH/MM		product family	
				engr	M. MOSTOLLER 7/14/03	scale		PwrBlade	
				chr	H. BREWBAKER 7/14/03	1:1		code	
				appd	M. MOSTOLLER 7/14/03			213	
sheet index		revision sheet						sheet	
								3 of 4	

code code 22526

Pro/E

Tous droits strictement réservés. Reproduction ou communication o des liers interdite sous quelque forme que ce soit sans autorisation écrite du propriétaire. Propriété de c FCI. Droits de reproduction FCI.



All rights strictly reserved. Reproduction or issue to third parties in any form whatever is not permitted without written authority from the proprietor. Property of FCI. Copyright FCI.

PRODUCT NUMBER
51760-10101601AA--
NOTE 3

NOTES:

1. DIMENSIONS AND TOLERANCES ARE IN ACCORDANCE WITH ASME Y14.5M, 1994 UNLESS OTHERWISE SPECIFIED.

CONNECTOR NOTES:

- 2. HOUSING MATERIAL: UL 94 V-0 GLASS FILLED
HIGH-TEMP THERMOPLASTIC
POWER CONTACT MATERIAL: COPPER ALLOY
SIGNAL PIN MATERIAL: COPPER ALLOY
 - 3. PLATING:
SEE PRINT 10064183 FOR PLATING SPEC OF 51760-10101601AA; 51760-10101601AALF
 - 4. MANUFACTURER'S NAME, P/N, AND DATE CODE TO APPEAR ON THIS SURFACE.
 - 5. PRODUCT SPECIFICATION GS-12-149.
APPLICATION SPECIFICATION BUS-20-067.
 - 6. PACKAGED IN TRAYS.
- PCB NOTES:
- 7. ALL HOLE DIAMETERS ARE FINISHED HOLE SIZE.
 - 8. MOUNTING HOLES, WHERE APPLICABLE, ARE UNPLATED.
 - 9. $\varnothing .0453 \pm .0010$ [1.151 \pm 0.025] DRILLED HOLES PLATED WITH
.0003 [0.008] MIN SnPb OVER .001 [0.03]
TO .003 [0.08] Cu PLATING TO ACHIEVE
 $\varnothing .040 \pm .003$ [1.02 \pm .07] HOLE.
 - 10. "DIM XXX" TO BE DETERMINED BY THE CUSTOMER.
 - 11. CONNECTOR KEEP-OUT ZONE.

mat'l code		SEE NOTE 2		tolerances unless otherwise specified		CUSTOMER		A FCI		www.fciconnect.com	
lir	ecr no.	dr	date	linear	.XX±.01/0.X±0.3	COPY		projection		title	
B					.XXX±.005/0.XX±0.13					IP + 16S + 1P R/A SOLDER RECEPTACLE	
				angles	.XXX±.002/0.XXX±0.051			INCH/MM		product family	
				dr	0° ± 2°			scale		PwrBlade	
				eng	M. MOSTOLLER 7/14/03	1:1		size		code	
				chr	M. MOSTOLLER 7/14/03			A		213	
				opod	H. BREWBAKER 7/14/03			51760-10101601AA		sheet	
					M. MOSTOLLER 7/14/03					4 of 4	
sheet index	revision										

code code 22526

Pro/E